



Ankara asf. 26. Km.  
Kemalpaşa, 35170  
İzmir / TURKEY  
T: +90.232. 878 4700  
F: +90.232. 878 4701  
E: info@fortecoathermalspray.com

SENTES-BIR POLAND  
ul.W. Witosza 20 Dziekanów Polski  
05-092 Łomianki / POLAND  
T: +48.22. 751 7536  
F: +48.22. 751 7537  
E: poland@sentes-bir.com

[www.fortecoathermalspray.com](http://www.fortecoathermalspray.com)

# FORTECOAT

Hard  
Surfacing  
Powders

# FORTECOAT

## Gas Atomized Spherical Powders

### Nickel Based Powders

PRODUCT CODE	ALLOY COMPOSITION	HARDNESS	APPLICATION
9040	Ni Cr7.2 B1.7 Si3.6 C0.36	40 HRC	• Fuseweld Flame Spray HVOF Thermal Spray PTA/Laser
9050	Ni Cr11.7 B2.3 Si3.1 C0.5	48 HRC	•
9056	Ni Cr14.7 B3.2 Si4.5 C0.7 Fe4.1	58 HRC	•
9045	Ni Cr10.5 B2.1 Si3.2 C0.27 Fe2.2	45 HRC	• • • •
9053	Ni Cr12 B2.2 Si3.2 C0.6 Fe3.4	52 HRC	• • • •
9060	Ni Cr14 B3.1 Si4.6 C0.7 Fe4.2	60 HRC	• • • •
9262	Ni Cr14.4 B3 Si4.5 C0.7 Fe4 Mo2.7 Cu2.1	62 HRC	• • • •
9018	Ni B1.2 Si2.2	230 HV <sub>30</sub>	•
9021	Ni B1.5 Si2.4	250 HV <sub>30</sub>	•
9034	Ni Cr7.5 B1.5 Si4.3 Fe1.6	34 HRC	• • • •
9120	Ni B0.65 Si2.1 P1.9	18 HRC	•
9122	Ni B0.9 Si2.2 P2	22 HRC	•
9125	Ni B1.05 Si2.4 P2	25 HRC	•
9130	Ni B1.2 Si3.5 P2.1	30 HRC	•
9134	Ni Cr4 B1.15 S2.7 Mo2.8 C0.15	34 HRC	• •
9327	Ni Cr3.6 B0.7 Si3.6 C0.17 Fe1 Al1.2	27 HRC	•
9333	Ni Cr4.5 B1 Si3.8 C0.22 Fe1.5 Al1.25	33 HRC	•
9433	Ni Al6 Mo5	33 HRC	• •
9428	Ni Al5	28 HRC	• •

### Cobalt Based Powders

PRODUCT CODE	ALLOY COMPOSITION	HARDNESS	APPLICATION
8001	Co Cr30 W12 C2.5	60 HRC	• • • • • Fuseweld Flame Spray HVOF Thermal Spray PTA/Laser
8006	Co Cr28.5 W4.6 C1.2 Si1.1	48 HRC	• • • • •
8012	Co Cr29.5 W8 C1.4 Si1.5	60 HRC	• • • • •

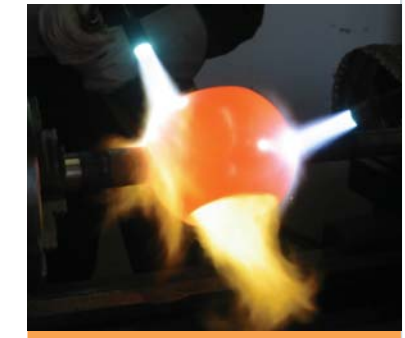
### Iron Based Powders

PRODUCT CODE	ALLOY COMPOSITION	HARDNESS	APPLICATION
6316	Fe Cr17 C0.1 Ni13 Mo2.5 Si1	280 HV <sub>10</sub>	• • • • Fuseweld Flame Spray HVOF Thermal Spray PTA/Laser
6316L	Fe Cr17 C0.03 Co13 Mo2.5 Si1	180 HV <sub>10</sub>	• • •

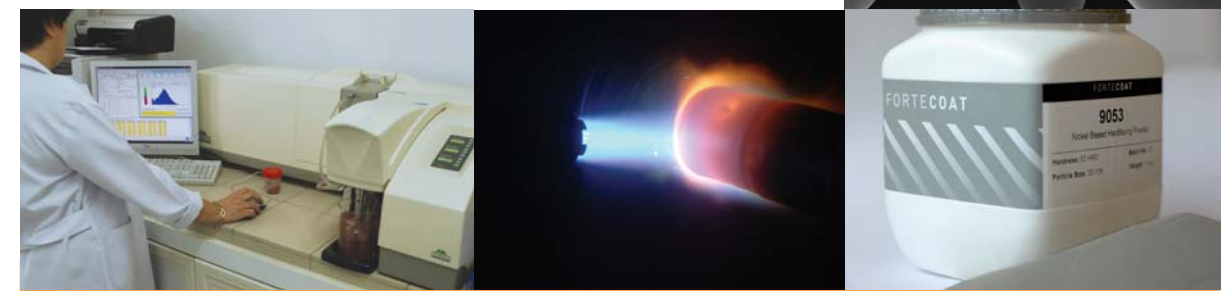
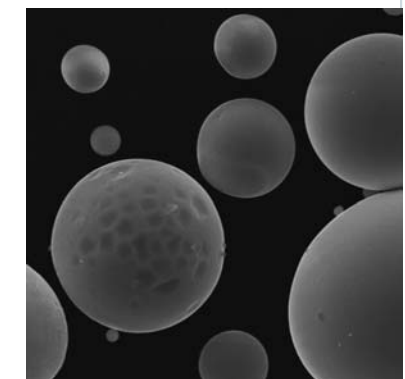
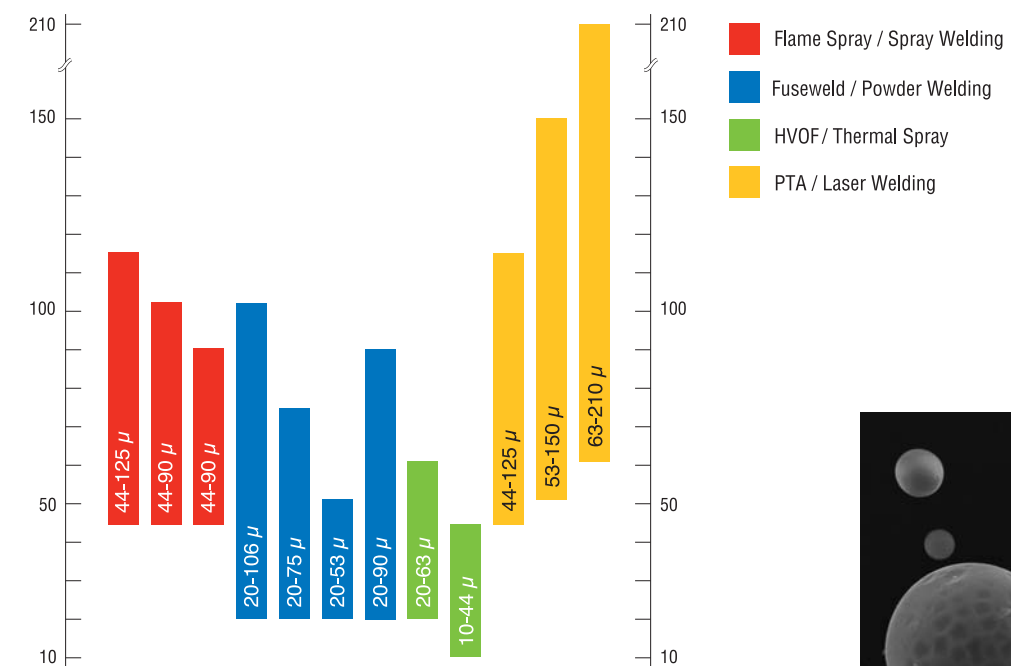
## Blend Powders

### Tungsten Carbide - Nickel Based Powders

PRODUCT CODE	ALLOY COMPOSITION	APPLICATION
5540	9050 + 40% WC	• • • Fuseweld Flame Spray HVOF Thermal Spray PTA/Laser
5550	9050 + 50% WC	• • •
5560	9050 + 60% WC	• • •
5570	9050 + 70% WC	• • •



## Particle Sizes



FORTECOAT